



## COUNTERWEIGHT MULTIPLIERS



**MORE GRIP IN THE FIELD  
LESS WEIGHT ON THE ROAD**

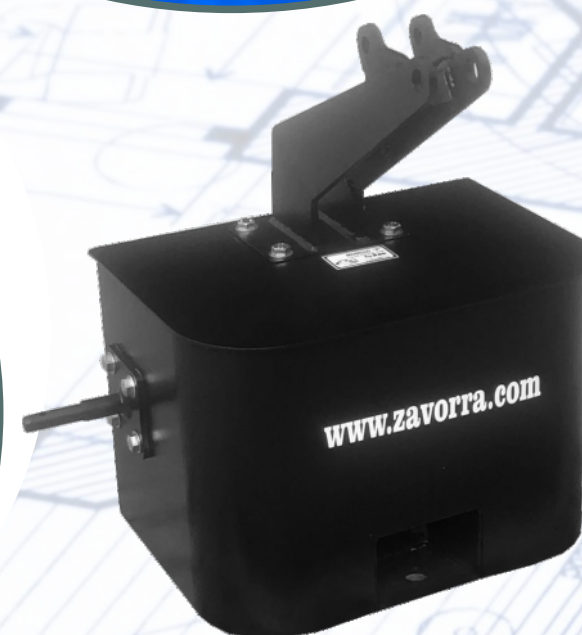
## ADVANTAGES

Certified by Alma Mater  
Studiorum University Bologna

**REDUCTION IN FUEL  
CONSUMPTION  
AND TYRE WEAR**

**INCREASE IN  
TRACTION**

**GREATER  
STABILITY**



**ANGHIARI (AR)**  
Via della Propositura, 2



**Sandro Dini:**  
(+39) 347 3344848



**Stella:**  
(+39) 339 2758808

[info@zavorra.com](mailto:info@zavorra.com)  
**www.zavorra.com**

## COUNTERWEIGHTS

**from 75 kg  
to 3,500 kg**

with all weights, for tractors  
with or without front lifter,  
**with tool  
compartment**



**The unit itself and the filler are  
made exclusively from steel!**

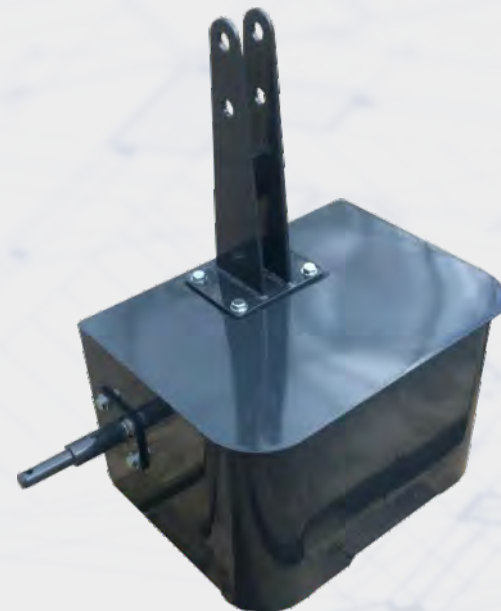


**Colours may be chosen  
according to tractor brand.**

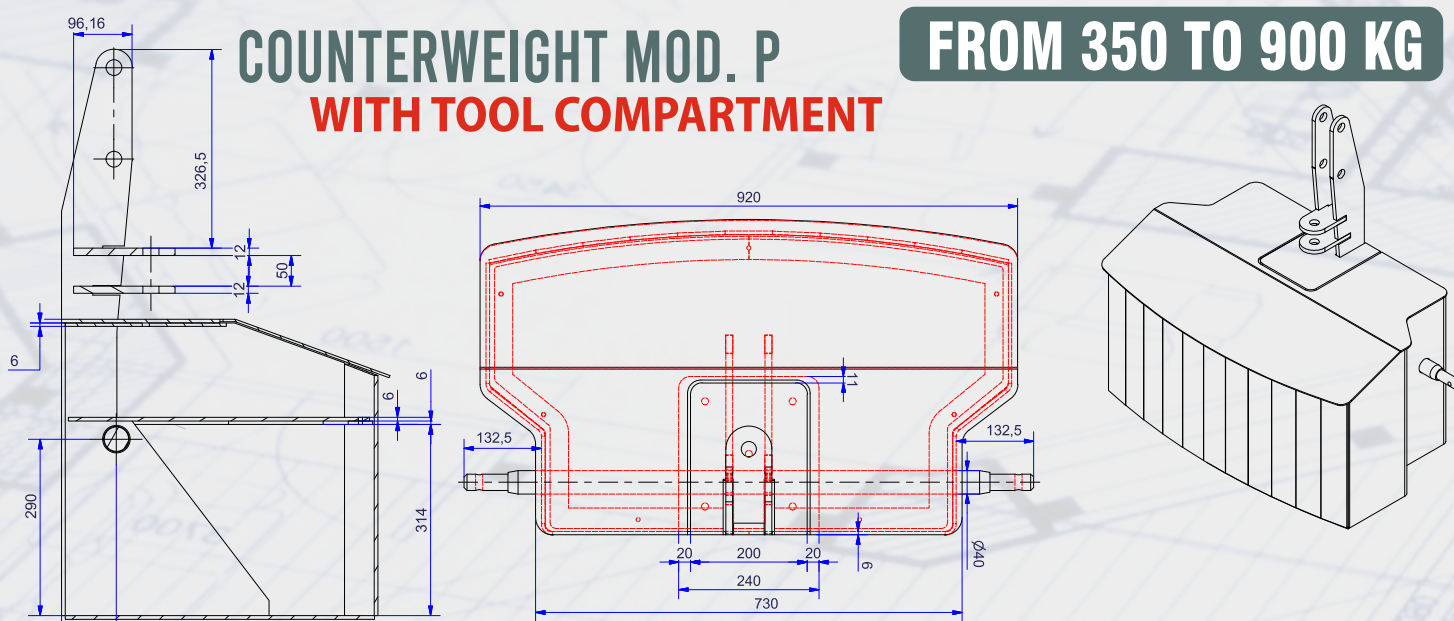




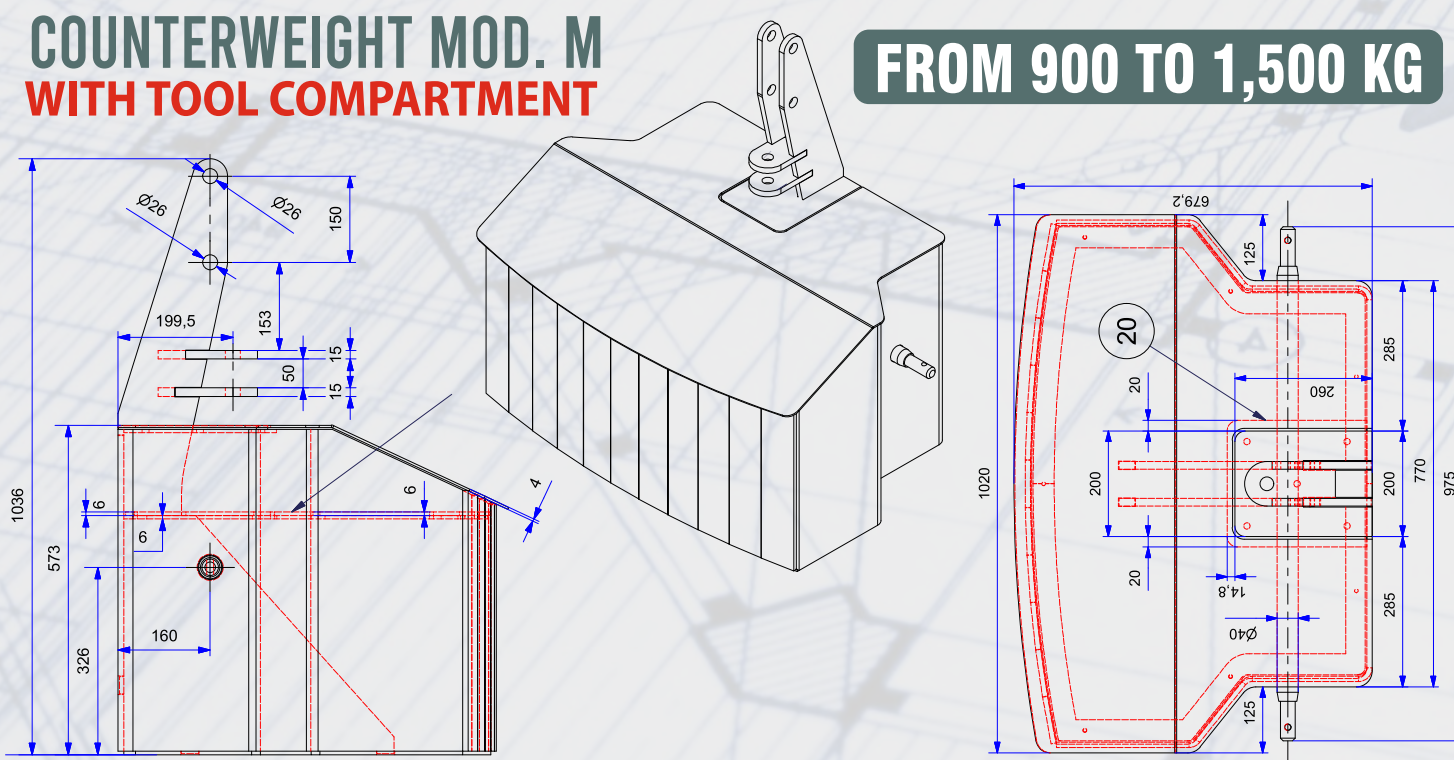
**COUNTERWEIGHT MOD. F**  
**WITH CATEGORY I OR II ATTACHMENT OR**  
**FOR TRACTORS WITH NO FRONT LIFTER**  
**FROM 200 TO 400 KG**



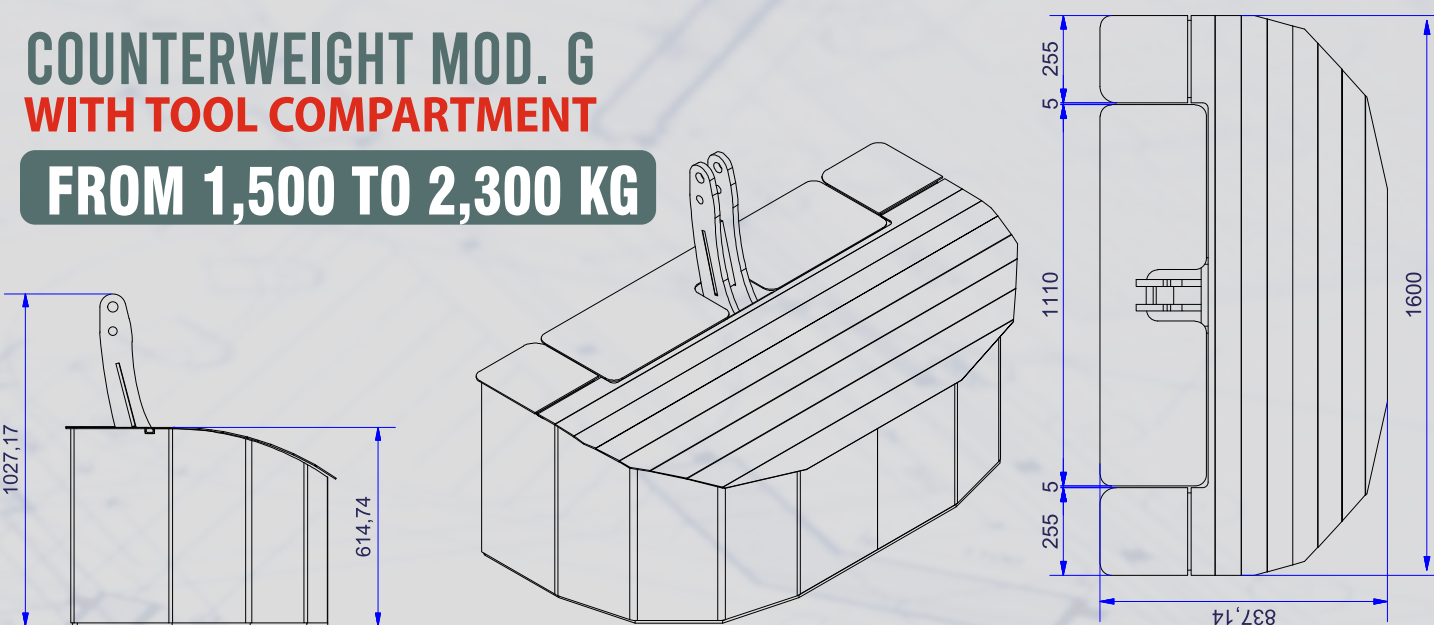
**COUNTERWEIGHT MOD. P**  
**WITH TOOL COMPARTMENT**  
**FROM 350 TO 900 KG**



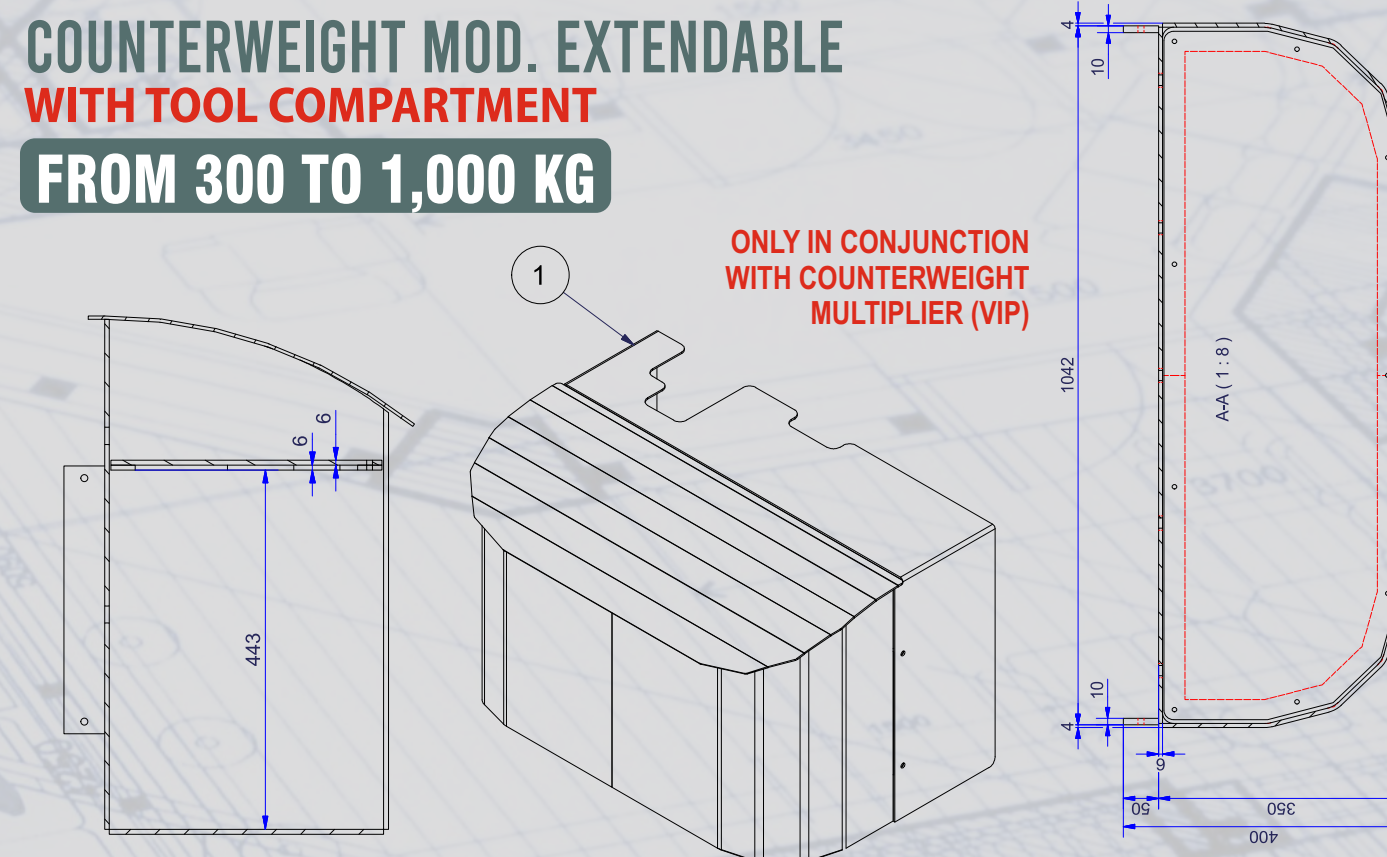
**COUNTERWEIGHT MOD. M**  
**WITH TOOL COMPARTMENT**  
**FROM 900 TO 1,500 KG**



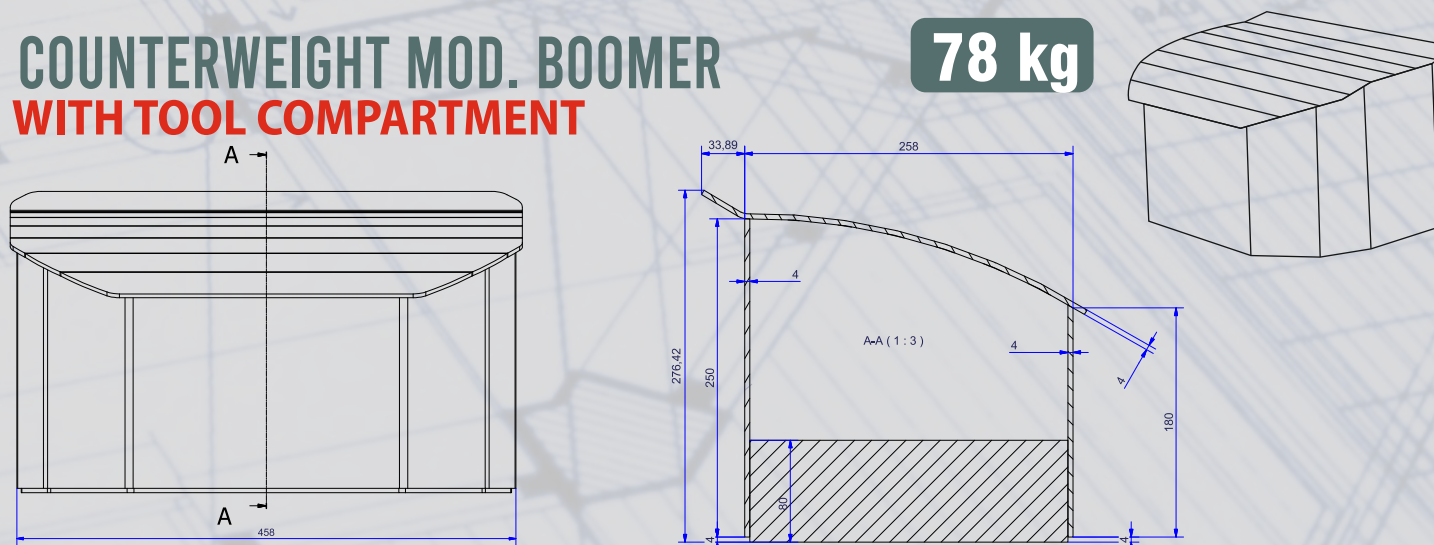
**COUNTERWEIGHT MOD. G**  
**WITH TOOL COMPARTMENT**  
**FROM 1,500 TO 2,300 KG**



**COUNTERWEIGHT MOD. EXTENDABLE**  
**WITH TOOL COMPARTMENT**  
**FROM 300 TO 1,000 KG**



**COUNTERWEIGHT MOD. BOOMER**  
**WITH TOOL COMPARTMENT**  
**78 kg**



**COUNTERWEIGHT MULTIPLIER (VIP)**

Weight: **500 kg**

Weight with  
Counterweight:  
up to **2,500 kg**

with effect up to  
**4,000 kg**



**COUNTERWEIGHT MULTIPLIERS MAY BE MOUNTED**  
**ON TRACTORS WITH OR WITHOUT LIFTER**

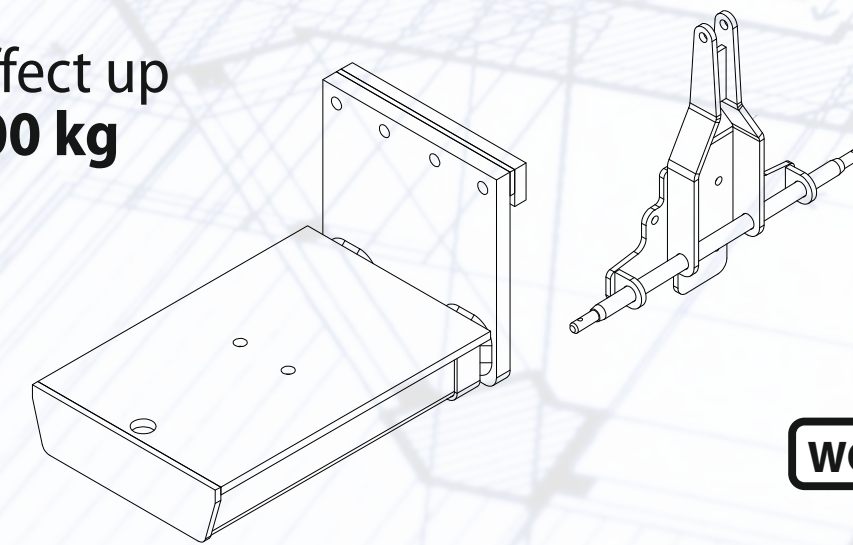
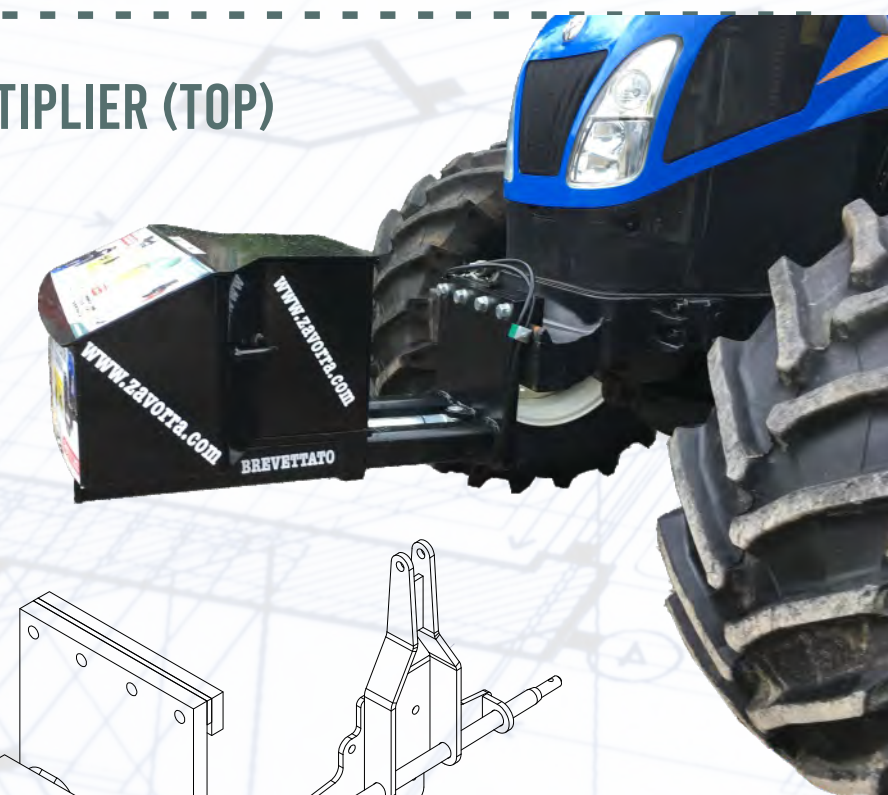
All counterweights in the catalogue can be mounted or,  
alternatively, the customer's counterweights can be used

**COUNTERWEIGHT MULTIPLIER (TOP)**

Weight: **150 kg**

Weight with  
Counterweight:  
up to **1,200 kg**

with effect up  
to **1,800 kg**



COUNTERWEIGHT MULTIPLIER